



City of Exeter

Introduction to Redistricting

October 26, 2021

Dr. Jeff Tilton, Senior Consultant
National Demographics Corporation

Redistricting Process

Step	Description
Pre-Draft Map Hearing October 26, 2021	<ul style="list-style-type: none">• Held prior to release of draft maps• Educate, solicit input on the communities in the Districts
Pre-Draft Map Hearing November 18, 2021	<ul style="list-style-type: none">• Held prior to release of draft maps• Educate, solicit input on the communities in the Districts
Census Data Releases	<ul style="list-style-type: none">• Census Bureau releases official 2020 Census population data – Aug. 12• California’s official ‘prisoner-adjusted’ 2020 redistricting data – Sept. 20, 27
Draft Map Hearing January 11, 2022	<ul style="list-style-type: none">• Discuss and revise the draft maps; discuss the election sequence• Deadline to submit draft maps: December 28, 2021, 5 p.m.• Post draft maps by January 4, 2022, 5 p.m.
Draft Map Hearing February 10, 2022	<ul style="list-style-type: none">• Discuss and select final map; discuss and determine election sequence• Deadline to submit draft maps: January 27, 2022, 5 p.m.• Post draft maps by February 3, 2022, 5 p.m.

Redistricting Rules and Goals

1. Federal Laws

- Equal Population
- Federal Voting Rights Act
- No Racial Gerrymandering



2. California Criteria for Cities

1. Geographically contiguous
2. Undivided neighborhoods and “communities of interest”
(Socio-economic geographic areas that should be kept together)
3. Easily identifiable boundaries
4. Compact
(Do not bypass one group of people to get to a more distant group of people)

3. Other Traditional Redistricting Principles

- Minimize voters shifted to different election years
- Respect voters’ choices / continuity in office
- Future population growth
- Preserving the core of existing districts

Prohibited: “Shall not favor or discriminate against a political party.”

2020 Cenus

<i>Exeter - Current Plan</i>							
Category	Field	A	B	C	D	E	Total
2020 Census	Total Population	1,941	2,101	2,247	1,850	2,246	10,385
	Population Deviation	-136	24	170	-227	169	397
	Pct. Deviation	-6.55%	1.16%	8.18%	-10.93%	8.14%	19.11%
Total Pop.	Hispanic/Latino	49%	53%	43%	63%	50%	51%
	NH White	45%	40%	49%	32%	44%	42%
	NH Black	1%	1%	0%	1%	1%	1%
	NH Asian/Pac.Isl.	2%	3%	4%	2%	2%	3%
	NH Native Amer.	2%	3%	2%	2%	2%	2%
Citizen Voting Age Pop	Total	1,167	1,192	1,626	1,006	1,546	6,536
	Hisp	25%	39%	22%	49%	37%	33%
	NH White	66%	58%	70%	47%	57%	61%
	NH Black	1%	0%	0%	0%	1%	0%
	Asian/Pac.Isl.	8%	3%	7%	4%	4%	5%
	Native Amer.	4%	1%	2%	1%	2%	2%

Defining Neighborhoods

1st Question: What is your neighborhood?

2nd Question: What are its geographic boundaries?

Examples of physical features defining a neighborhood boundary:

- Natural neighborhood dividing lines, such as highway or major roads, rivers, canals and/or hills
- Areas around parks or schools
- Other neighborhood landmarks

In the absence of public testimony, planning records and other similar documents may provide definition.



Beyond Neighborhoods: Defining Communities of Interest

1st Question: What defines your community?

- Geographic Area, plus
- Shared issue or characteristic
 - Shared social or economic interest
 - Impacted by city policies
- Tell us “your community’s story”

2nd Question: Would this community benefit from being “included within a single district for purposes of its effective and fair representation”?

- Or would it benefit more from having multiple representatives?

Definitions of Communities of Interest may not include relationships with political parties, incumbents, or political candidates.

Possible Neighborhoods / Communities

Public Mapping and Map Review Tools

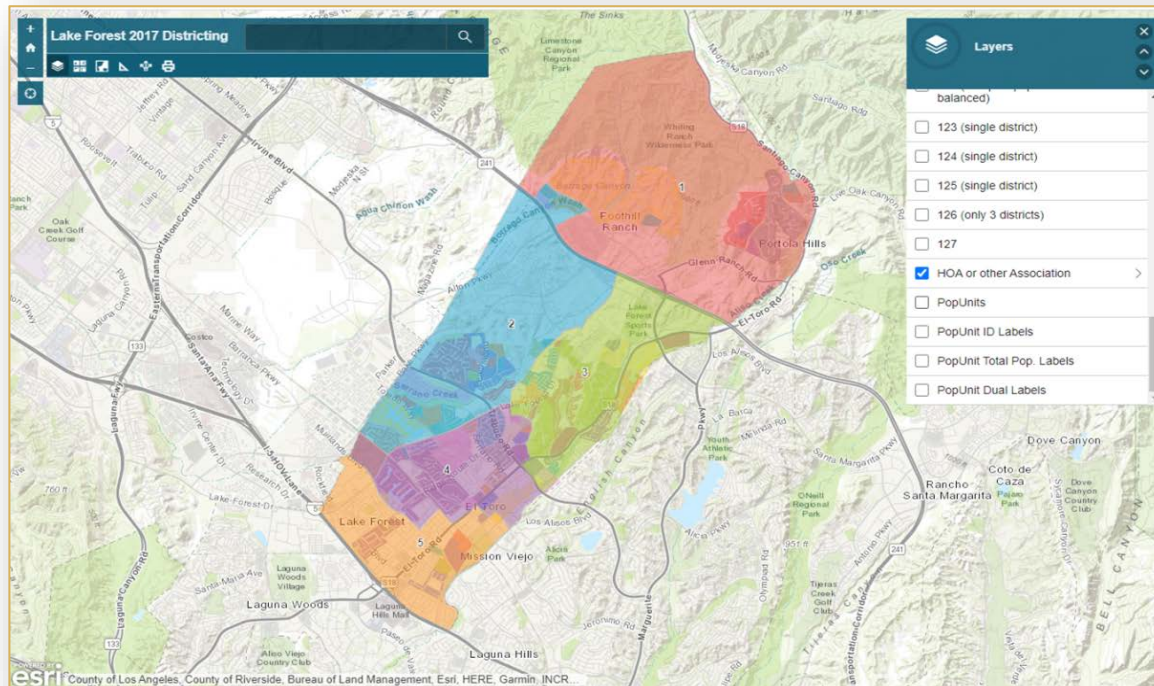
- **Different tools for different purposes**
- **Different tools for different levels of technical skill and interest**
 - Simple “review draft maps” tool
 - Powerful, data-rich “Draw a draft map” tool

Whether you use the powerful (but complicated) online mapping tool, Excel, the paper kit, or just draw on a napkin, we welcome your maps!

Simple Map Review Tool

Online Interactive Review Map

- ESRI's "ArcGIS Online" – similar to Google Maps in ease of use
- Used to review, analyze and compare maps, not to create them
- Includes overlays of "community of interest" and other data



Dave's Redistricting

“Draw Your Districts” focus

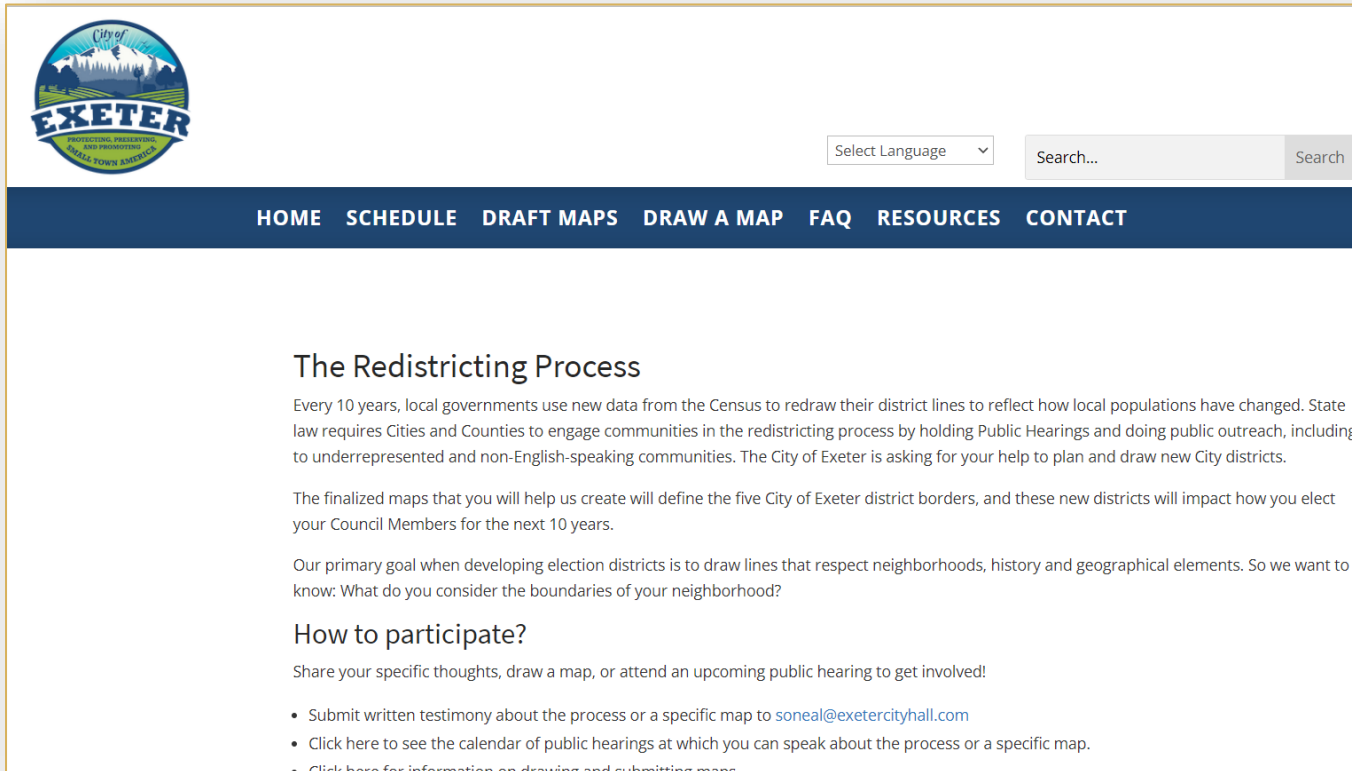
- DavesRedistricting.org

The screenshot displays the Dave's Redistricting software interface for Exeter City Council. The main map shows a city outline with several districts outlined in red. A central district is highlighted with a cyan border and a green checkmark. The interface includes a top navigation bar with 'DRA2020' and 'Exeter City Council Blank Template'. A left sidebar contains a 'District Selector' table and 'Overlays' options. A right sidebar shows 'Precinct Details' for 'Block Group 3'. The bottom of the map area includes a 'Map saved to server.' notification and a 'mapbox' logo.

District Selector		
District	Population	Deviation
Un	10,385	0
1	0	-7,904.687
2	0	-7,904.687
3	0	-7,904.687
4	0	-7,904.687
5	0	-7,904.687

Precinct Details		
Block Group 3 []		
Total Pop (Adj) 2020		
	Pop	%
Total	1,824	100.0%
White	507	27.6%
Hispanic	1,215	66.2%
Black	34	1.9%
Asian	27	1.5%
Native	124	6.8%
Pacific	11	0.6%
Citizen VAP 2019		
	Pop	%
Total	1,105	100.0%
White	525	47.5%
Hispanic	550	49.8%
Black	0	0.0%
Asian	10	0.9%
Native	20	1.8%
Pacific	0	0.0%

Share Your Thoughts



The screenshot shows the City of Exeter website. At the top left is the City of Exeter logo, which includes a mountain range and the text 'City of EXETER PROTECTING, PRESERVING AND PROMOTING SMALL TOWN AMERICA'. To the right of the logo is a 'Select Language' dropdown menu and a search bar with the text 'Search...'. Below the logo and search bar is a dark blue navigation bar with white text: 'HOME SCHEDULE DRAFT MAPS DRAW A MAP FAQ RESOURCES CONTACT'. The main content area has a white background. The section title is 'The Redistricting Process'. The text below the title reads: 'Every 10 years, local governments use new data from the Census to redraw their district lines to reflect how local populations have changed. State law requires Cities and Counties to engage communities in the redistricting process by holding Public Hearings and doing public outreach, including to underrepresented and non-English-speaking communities. The City of Exeter is asking for your help to plan and draw new City districts.' Below this is another paragraph: 'The finalized maps that you will help us create will define the five City of Exeter district borders, and these new districts will impact how you elect your Council Members for the next 10 years.' The next paragraph states: 'Our primary goal when developing election districts is to draw lines that respect neighborhoods, history and geographical elements. So we want to know: What do you consider the boundaries of your neighborhood?' This is followed by the section title 'How to participate?' and the text 'Share your specific thoughts, draw a map, or attend an upcoming public hearing to get involved!'. At the bottom of the screenshot is a bulleted list: '• Submit written testimony about the process or a specific map to soneal@exetercityhall.com', '• Click here to see the calendar of public hearings at which you can speak about the process or a specific map.', and '• Click here for information on drawing and submitting maps.'

Website: draw.cityofexeter.com

Phone: [559-592-9244](tel:559-592-9244) | Email: soneal@exetercityhall.com

Public Hearing & Discussion

- ❑ What is your neighborhood and what are its boundaries?

- ❑ What other notable areas are in the City, and what are their boundaries?